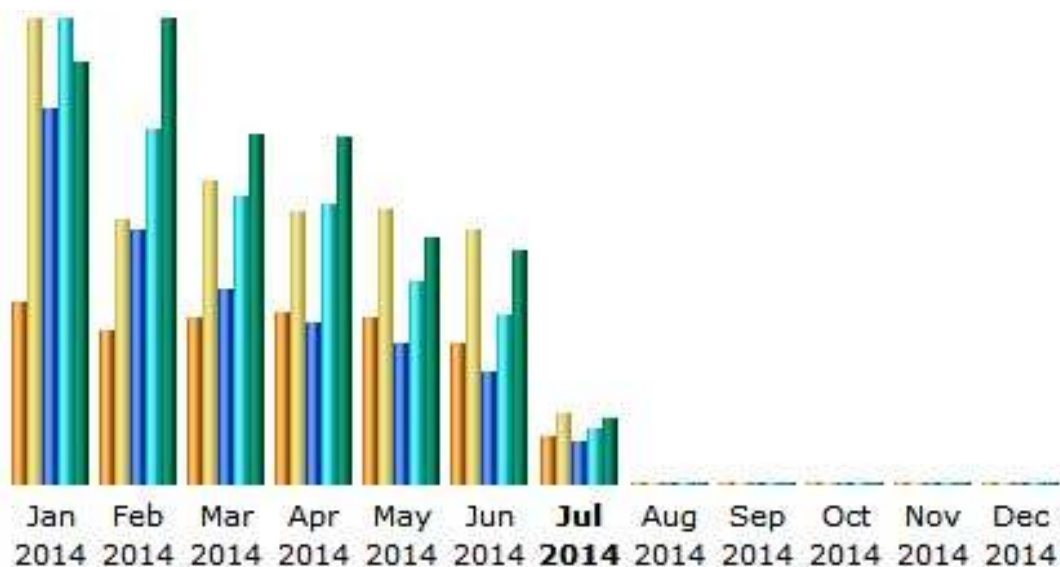
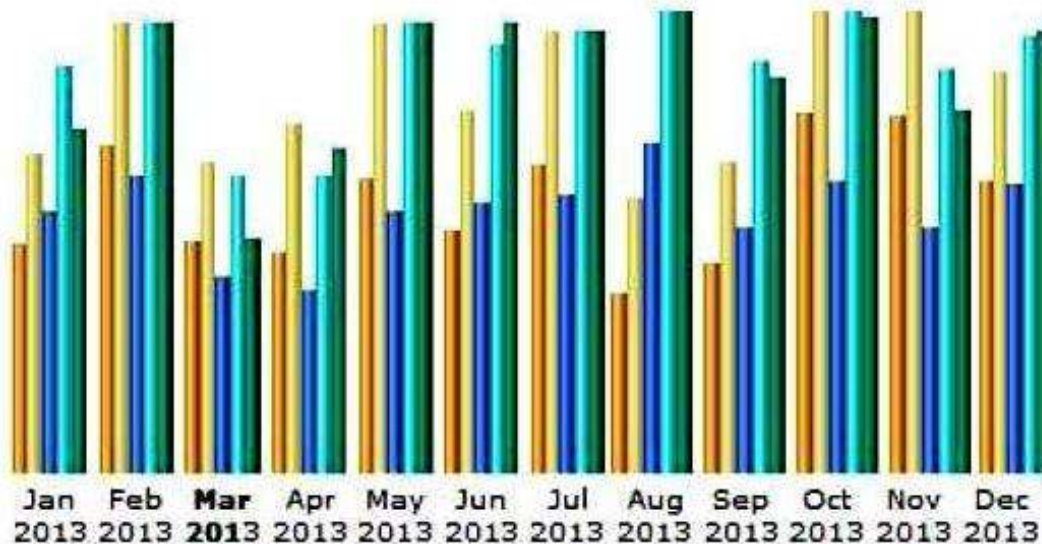


STATISTIK CAPAIAN PENGGUNA SISTEM ONLINE MAJLIS PERBANDARAN TEMERLOH (JANUARI 2014 – DISEMBER 2014)



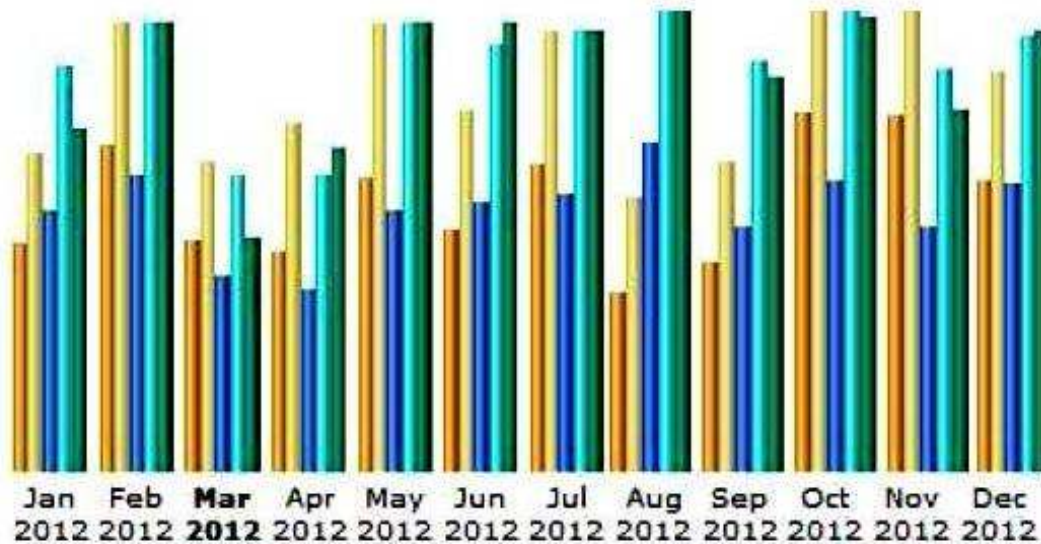
| Month | Unique visitors | Number of visits | Pages | Hits | Bandwidth |
|-----------------|-----------------|------------------|---------------|---------------|------------------|
| Jan 2014 | 582 | 1,493 | 5,728 | 7,106 | 52.92 MB |
| Feb 2014 | 490 | 852 | 3,871 | 5,409 | 58.28 MB |
| Mar 2014 | 538 | 972 | 2,989 | 4,406 | 43.87 MB |
| Apr 2014 | 551 | 878 | 2,464 | 4,277 | 43.63 MB |
| May 2014 | 535 | 883 | 2,162 | 3,100 | 31.02 MB |
| Jun 2014 | 454 | 816 | 1,705 | 2,578 | 29.21 MB |
| Jul 2014 | 153 | 226 | 633 | 842 | 8.25 MB |
| Aug 2014 | 0 | 0 | 0 | 0 | 0 |
| Sep 2014 | 0 | 0 | 0 | 0 | 0 |
| Oct 2014 | 0 | 0 | 0 | 0 | 0 |
| Nov 2014 | 0 | 0 | 0 | 0 | 0 |
| Dec 2014 | 0 | 0 | 0 | 0 | 0 |
| Total | 3,303 | 6,120 | 19,552 | 27,718 | 267.19 MB |

STATISTIK CAPAIAN PENGGUNA
 STATISTIK CAPAIAN PENGGUNA
 SISTEM ONLINE MAJLIS PERBANDARAN TEMERLOH
 (JANUARI 2013 – DISEMBER 2013)



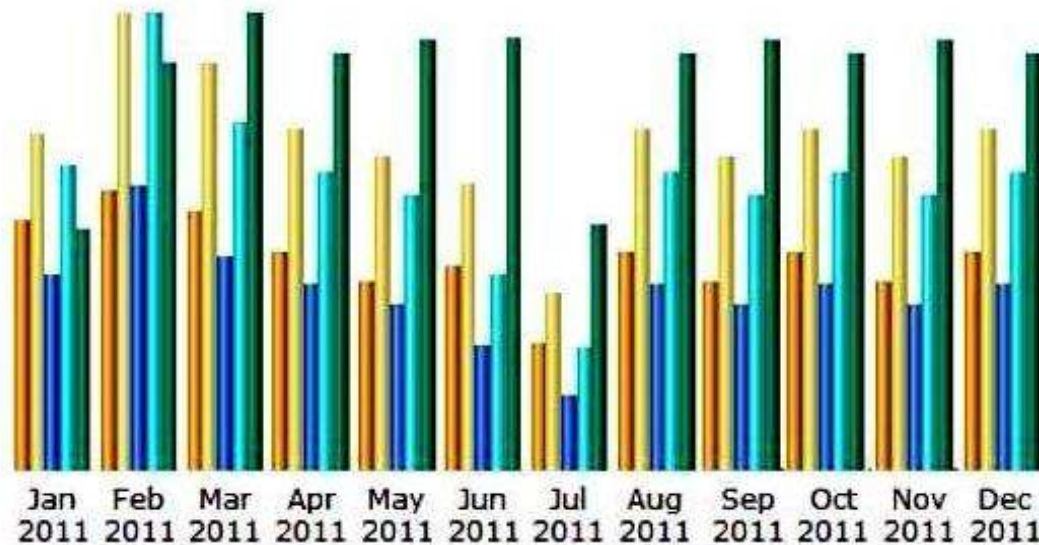
| Month | Unique visitors | Number of visits | Pages | Hits | Bandwidth |
|-----------------|-----------------|------------------|---------------|---------------|------------------|
| Jan 2013 | 227 | 316 | 2,169 | 3,385 | 31.25 MB |
| Feb 2013 | 326 | 446 | 2,468 | 3,748 | 40.90 MB |
| Mar 2013 | 230 | 309 | 1,644 | 2,467 | 21.25 MB |
| Apr 2013 | 180 | 283 | 1,126 | 1,856 | 17.49 MB |
| May 2013 | 238 | 365 | 1,618 | 2,785 | 24.32 MB |
| Jun 2013 | 197 | 295 | 1,716 | 2,733 | 33.09 MB |
| Jul 2013 | 315 | 451 | 2,779 | 4,392 | 41.43 MB |
| Aug 2013 | 287 | 444 | 3,406 | 5,092 | 59.04 MB |
| Sep 2013 | 338 | 498 | 2,549 | 4,276 | 47.40 MB |
| Oct 2013 | 577 | 792 | 3,020 | 5,106 | 54.62 MB |
| Nov 2013 | 572 | 780 | 2,541 | 4,192 | 43.43 MB |
| Dec 2013 | 520 | 720 | 3,332 | 5,032 | 71.45 MB |
| Total | 3,224 | 4,628 | 22,087 | 35,464 | 392.29 MB |

STATISTIK CAPAIAN PENGGUNA SISTEM ONLINE MAJLIS PERBANDARAN TEMERLOH (JANUARI 2012 – DISEMBER 2012)



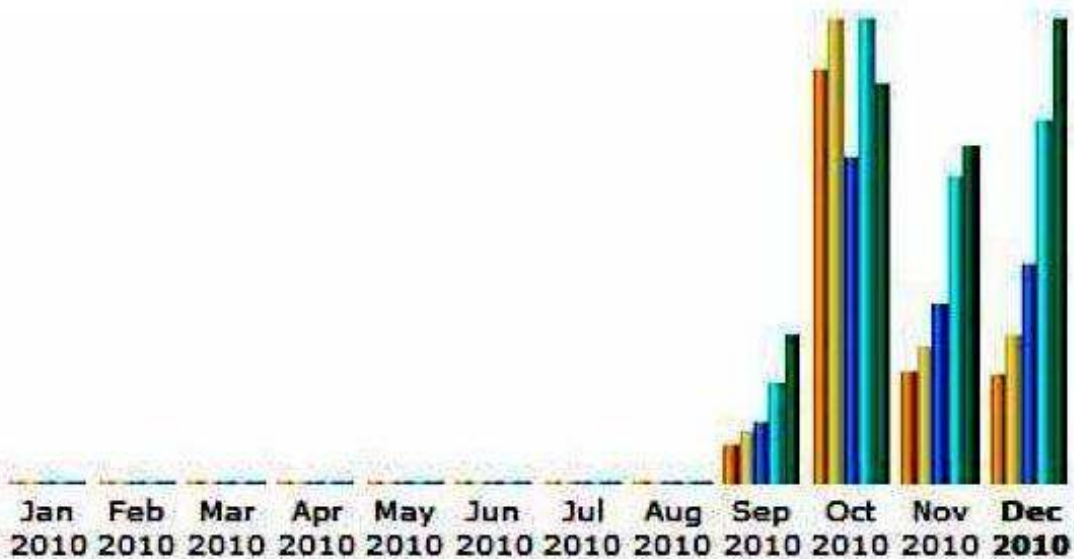
| Month | Unique visitors | Number of visits | Pages | Hits | Bandwidth |
|-----------------|-----------------|------------------|---------------|---------------|------------------|
| Jan 2012 | 227 | 316 | 2,169 | 3,385 | 31.25 MB |
| Feb 2012 | 326 | 446 | 2,468 | 3,748 | 40.90 MB |
| Mar 2012 | 230 | 309 | 1,644 | 2,467 | 21.25 MB |
| Apr 2012 | 180 | 283 | 1,126 | 1,856 | 17.49 MB |
| May 2012 | 238 | 365 | 1,618 | 2,785 | 24.32 MB |
| Jun 2012 | 197 | 295 | 1,716 | 2,733 | 33.09 MB |
| Jul 2012 | 315 | 451 | 2,779 | 4,392 | 41.43 MB |
| Aug 2012 | 287 | 444 | 3,406 | 5,092 | 59.04 MB |
| Sep 2012 | 338 | 498 | 2,549 | 4,276 | 47.40 MB |
| Oct 2012 | 577 | 792 | 3,020 | 5,106 | 54.62 MB |
| Nov 2012 | 572 | 780 | 2,541 | 4,192 | 43.43 MB |
| Dec 2012 | 520 | 720 | 3,332 | 5,032 | 71.45 MB |
| Total | 3,224 | 4,628 | 22,087 | 35,464 | 392.29 MB |

STATISTIK CAPAIAN PENGGUNA SISTEM ONLINE MAJLIS PERBANDARAN TEMERLOH (JANUARI 2011 – DISEMBER 2011)



| Month | Unique visitors | Number of visits | Pages | Hits | Bandwidth |
|--------------|-----------------|------------------|---------------|---------------|-------------------|
| Jan 2011 | 245 | 328 | 2,596 | 4,007 | 54.87 MB |
| Feb 2011 | 275 | 447 | 3,755 | 5,998 | 92.24 MB |
| Mar 2011 | 254 | 399 | 2,801 | 4,598 | 103.57 MB |
| Apr 2011 | 216 | 333 | 2,449 | 3,915 | 94.80 MB |
| May 2011 | 185 | 307 | 2,196 | 3,621 | 97.65 MB |
| Jun 2011 | 201 | 281 | 1,639 | 2,597 | 98.13 MB |
| Jul 2011 | 125 | 172 | 999 | 1,623 | 55.66 MB |
| Aug 2011 | 216 | 333 | 2,449 | 3,915 | 94.80 MB |
| Sep 2011 | 206 | 303 | 2,040 | 3,010 | 90.00 MB |
| Oct 2011 | 236 | 355 | 2,545 | 3,955 | 95.80 MB |
| Nov 2011 | 217 | 337 | 2,477 | 3,975 | 94.70 MB |
| Dec 2011 | 212 | 323 | 2,429 | 3,215 | 92.20 MB |
| Total | 2,588 | 3,918 | 28,375 | 44,429 | 1064.42 MB |

**STATISTIK CAPAIAN PENGGUNA
SISTEM ONLINE MAJLIS PERBANDARAN TEMERLOH
(SEPTEMBER 2010 – DISEMBER 2010)**



| Month | Unique visitors | Number of visits | Pages | Hits | Bandwidth |
|-----------------|-----------------|------------------|-------------|-------------|-----------------|
| Jan 2010 | 0 | 0 | 0 | 0 | 0 |
| Feb 2010 | 0 | 0 | 0 | 0 | 0 |
| Mar 2010 | 0 | 0 | 0 | 0 | 0 |
| Apr 2010 | 0 | 0 | 0 | 0 | 0 |
| May 2010 | 0 | 0 | 0 | 0 | 0 |
| Jun 2010 | 0 | 0 | 0 | 0 | 0 |
| Jul 2010 | 0 | 0 | 0 | 0 | 0 |
| Aug 2010 | 0 | 0 | 0 | 0 | 0 |
| Sep 2010 | 18 | 26 | 233 | 375 | 2.78 MB |
| Oct 2010 | 203 | 227 | 1246 | 1774 | 7.46 MB |
| Nov 2010 | 55 | 68 | 686 | 1174 | 6.30 MB |
| Dec 2010 | 53 | 72 | 832 | 1388 | 8.64 MB |
| Total | 329 | 393 | 2997 | 4711 | 25.17 MB |